



## Employee gift ideas

Lots of winter!





## Gift box as an alternative Christmas party

Challenging times need special ideas – especially in very practical questions of personnel marketing. Because when we are forced to keep our distance, an extra portion of creativity is required: With the small Christmas party in the gift box, employers can simply send their thank-you to the home office or place it as a surprise idea at the workplaces in offices and productions.

This goes down well with employees as an alternative to the end-of-the-year party:

- 1 **branded Christmas gifts** that remind you of a typical Christmas party or market.
- 2 a designed **greeting card with a covering letter from the employer** as a substitute for the typical boss speech at a party.
- 3 all in a personalised **corporate-look party box** with printed sleeve and protective filler.

## WINTER MAILING

FROM 38 €\*  
PER BOX

All items, the box and the card are branded with winter branding and your individual logo, making each gift unique to your company.

Available within 21 working days after production release.

The minimum order quantity is **75 pieces** for the “Winter Mailing” and **150 pieces** for the “Corporate Mailing”.

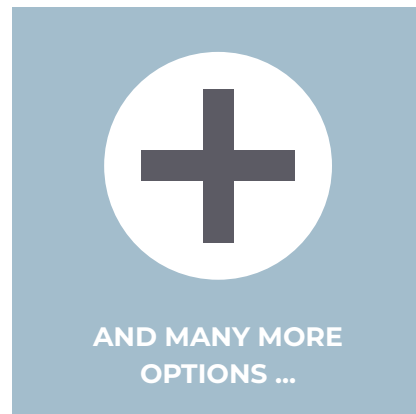
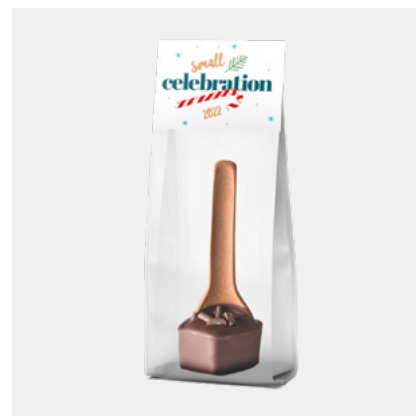
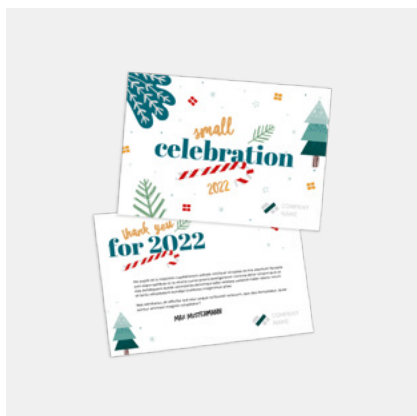
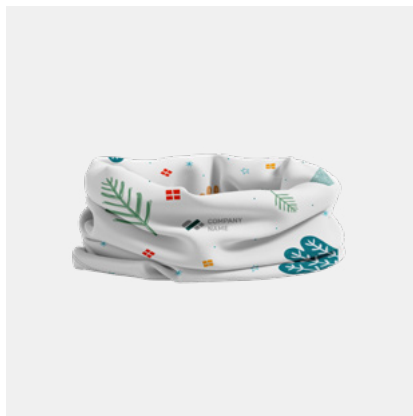
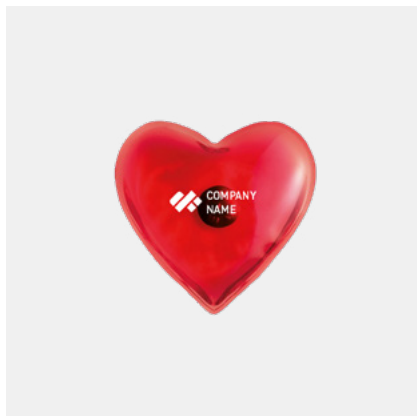
## CORPORATE MAILING

PRICES ON  
REQUEST

All components of the gift box are individually developed and adapted to your company. From the box to the contents: everything in your corporate design!

## EVERYTHING FOR YOUR ALTERNATIVE CHRISTMAS PARTY:

How do we get a whole staff Christmas party into one box? Here comes the selection of our product ideas for the alternative Christmas party that you can send by post to your employees in the home office.



\* plus VAT and shipping costs

\*\* The product shown is only an example. Due to the seasonality of the item, there may be variations.

## BACKPACK

### DETAILS

Size: 46 × 12.5 × 30 cm

Material: recycled cotton

### COLOURS



## SHOPPING BAG

### DETAILS

Size: 38 × 42 cm

Material: recycled cotton  
and recycled polyester

### COLOURS







## HOODIE

### DETAILS

Sizes: Unisex: XS – 3XL

Material: 65% polyester,  
35% cotton

### COLOURS



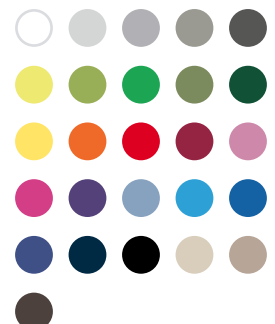
## T-SHIRT

### DETAILS

Sizes: Unisex: XS – 4XL

Material: 100% cotton

### COLOURS



## CHRISTMAS HAT

### DETAILS

Size: 42 x 30 cm

Material: rPET

### COLOURS



## CHRISTMAS-SOCKS

### DETAILS

Größe: One size fits all

Material: 80 % oeko-tex certified cotton,  
18 % polyamide,  
2 % spandex

### COLOURS





### POCKET UMBRELLA WITH PRINTED TUBE

#### DETAILS

Size: ø 90 cm

Weight: 275 g

Material: Polyester

#### COLOURS



### HAND WARMER

#### DETAILS

Size: 7.5 x 9 cm

Weight: 65 g

Material: PVC

#### COLOURS



### 6-IN-1 LADEKABEL

#### DETAILS

Size: 6.1 × 1.65 × 1.2 cm  
Material: stainless steel  
cover

#### COLOURS



### JBL BLUETOOTH SPEAKER

#### DETAILS

Size: 7.1 × 8.6 × 3.2 cm  
Material: plastic

#### COLOURS







### GROWING TREE "PINE"

#### DETAILS

Size: 7 × 6.5 × 6.5 cm

Including pine seeds  
(pinus nigra)



### CHRISTMAS DECORATION "SNOWFLAKE"

#### DETAILS

Size: 7.9 × 7.0 × 0.2 cm

Material: wood

## LUNCHBOX

### DETAILS

Size: 16 × 11 × 5.5 cm

Material: stainless steel,  
bamboo

### COLOURS



## LUNCHBOX

### DETAILS

Size: 10 × 12 cm

Material: thermoplastic  
resin, cardboard

### COLOURS





## BEESWAX WIPES

### DETAILS

Size: 20 × 20 cm,

25 × 25 cm, 30 × 30 cm

Material: organic cotton,  
tree resin, coconut oil  
and beeswax

### COLOURS



## ENAMEL MUG

### DETAILS

Size: 8 × Ø 8.7 cm

Filling quantity: 300 ml

Material: enamel

### COLOURS



## COFFEE-2-GO MUG

### DETAILS

Filling quantity : 400 ml  
Material: from renewable raw materials (corn & sugar cane)

### COLOURS



## COFFEE-2-GO PLA CUP

### DETAILS

Size: 8.6 × 8.6 cm  
Filling quantity: 280 ml  
Material: PLA and silicon

### COLOURS







## STAINLESS STEEL DRINKING BOTTLE

### DETAILS

Size: 21 × Ø 7 cm

Filling quantity: 500 ml

Material: stainless steel

### COLOURS



## GRASS PAPER NOTEBOOK

### DETAILS

Size: 21 × 15 × 1.5 cm

Material: grass paper

## BUTTON

### DETAILS

Size: ø 5.6 cm

### COLOURS



## HANDMADE POPCORN

### DETAILS

Ingredients from controlled cultivation and corn without genetic engineering  
Content: 100 g

### COLOURS





### CANDY CANE WITH GREETING CARD

#### DETAILS

Size: 14.8 × 10.5 cm

Content: 10 g

#### COLOURS



### NUT GREETINGS

#### DETAILS

Size: 9 × 10 cm

Content: approx. 10 g

#### COLOURS



## EATABLE SNOWBALLS

### DETAILS

Size: 17 × 7 × 4 cm

Content: 45 g

### COLOURS



## CINNAMON STAR

### DETAILS

Size: 8 × 4.5 × 1 cm

Content: 6 g

### COLOURS







### SWEET DIY SNOWMAN

#### DETAILS

Size: 14.5 × 5.5 × 3.5 cm

Content: 28 g

#### COLOURS



### VANILLA CROISSANT

#### DETAILS

Size: 12 × ø 7 cm

Content: 135 g

#### COLOURS



**CHOCOLATE  
SANTA CLAUS  
(MADE OF 100 %  
RESCUED MIXED  
CHOCOLATE)**

**DETAILS**

Size: 5.5 × 14.5 × 4.2 cm

Content: 50 g

**COLOURS**



**ROASTED ALMONDS**

**DETAILS**

Size: 6 × 4 × 15.5 cm

Content: 60 g

**FARBEN**





### FAIR TRADE CHOCOLATE

#### DETAILS

Size: 5.6 x 3.6 x 0.6 cm

Contet: 10 g

#### COLOURS



### MULLED WINE SPICE IN A JAR

#### DETAILS

Size: 5.5 x 6 cm

Content: approx. 20 g

#### COLOURS



## MULLED WINE SWEETS & ICE CANDIES

### DETAILS

Size: 14,5 × 5,5 × 3,5 cm

Content: 80 g

### COLOURS



## COTTON CANDY

### DETAILS

Size: ø 7,5 cm

Content: 30 g

### COLOURS







Display cleaner

**DETAILS**

Size: ø 7 cm

Material: underside made  
of microfiber, top side  
made of polyester



**AND MANY MORE  
OPTIONS ...**

# at close quarters

When people enjoy working together, it is noticeable in the result. And without exaggerating: We like our job, love good ideas and are proud of great results – that at the same time we are having a good time, should be quickly noticeable!

**[www.suggle.de/en](http://www.suggle.de/en)**



**Philip Steinbach**

PURCHASING & PRODUCTION

[philip@suggle.de](mailto:philip@suggle.de)

+49 2196 858900-15



**Katharina Palmer**

CONCEPT & CONSULTING

[katharina@suggle.de](mailto:katharina@suggle.de)

+49 2196 858900-25



**Melanie Tiede**

CONCEPT & CONSULTING

[melanie@suggle.de](mailto:melanie@suggle.de)

+49 2196 858900-16



**Adrian Miltkau**

PURCHASING & PRODUCTION

[adrian@suggle.de](mailto:adrian@suggle.de)

+49 2196 858900-19



**Angela Obrycki**

PURCHASING & PRODUCTION

[angela@suggle.de](mailto:angela@suggle.de)

+49 2196 858900-33



**Leonie Mlinartzik**

PURCHASING & PRODUCTION

[leonie@suggle.de](mailto:leonie@suggle.de)

+49 2196 858900-34

# SUGGLE brings out the best for you!

**SUGGLE makes the difference because our heart beats for good, honest and effective marketing. With over 15 years of experience in the marketing and human resources industry, we have conceived, designed and accompanied communication projects, mailings and recruiting campaigns for B2B and B2C companies.**



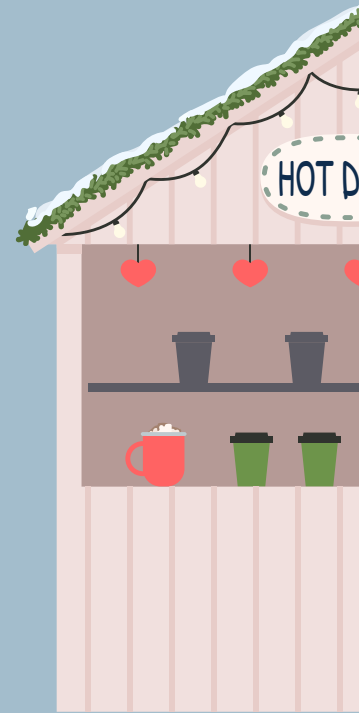
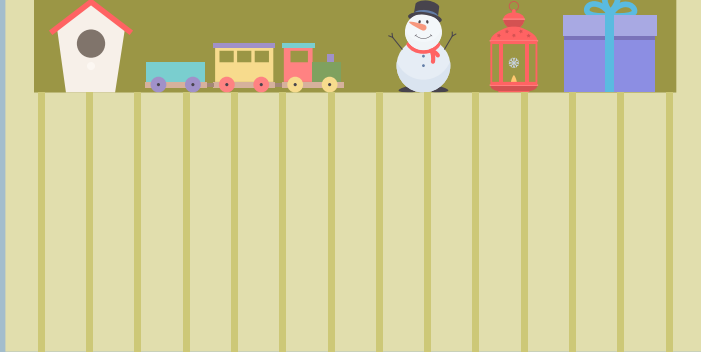
The pure procurement of advertising materials is no longer an art these days – at least this impression is created with regard to the oversupply of the always same products without recognition value. Our claim differs in its core: We find exactly the right promotional items for every company, which are characterized by functionality and a lot of emotion. No run-of-the-mill products, but high-quality articles, that will remain in the memory of your customers and business partners.

what does  
**suggle**  
mean?

[to]  
**suggest**

SUGGLE is a neologism inspired by the English word **“to suggest”**. This describes the main benefit of the SUGGLE brand: We ask, listen and then develop suggestions and ideas for the useful and sustainable use of promotional items – completely individual.





**Office Bergisches Land**  
Kreckersweg 16d  
42929 Wermelskirchen



**Warehouse Bergisches Land**  
Altenberger Straße 2  
42929 Wermelskirchen



**Office Cologne**  
Domstraße 55-73  
50668 Cologne